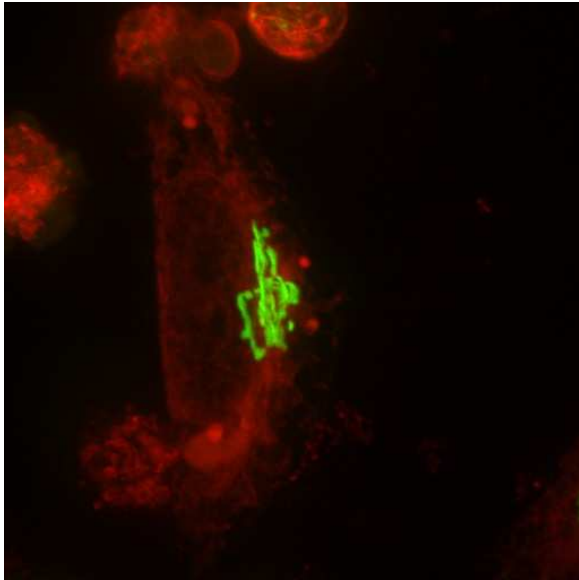




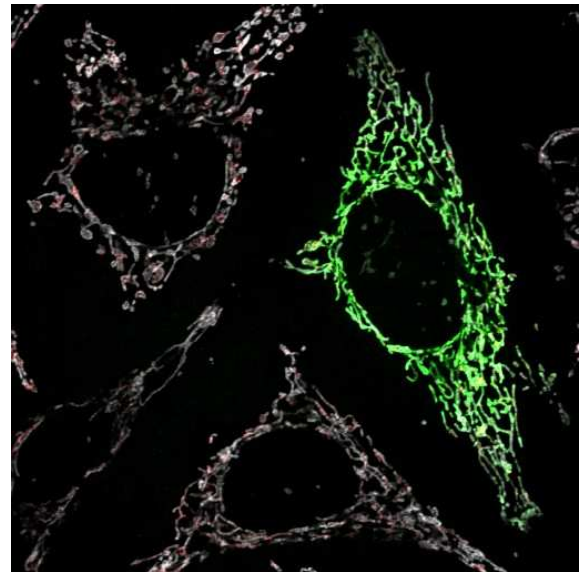
- ✓ Identifika ezazu argazki bakoitzean ikusten den egitura/prozesu nagusia. Adierazi ere zein den erabilitako mikroskopia mota. (**MO**: Mikroskopia optikoa; **FLUO**: Fluoreszentziako mikroskopia; **TEM**: Transmisiozko mikroskopia elektronikoa, **SEM**: Ekorketazko mikroskopia elektronikoa)

Mikroskopia

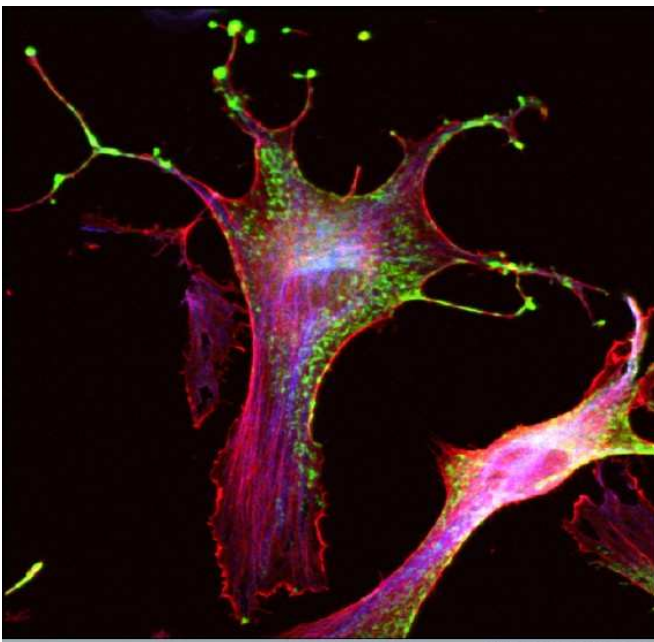
▪ Mitokondrioak		A	B	C	D
▪ Erretikulu endoplasmatikoa		A	B	C	D
▪ Golgi aparatua		A	B	C	D
▪ Jariatze-pikorrak (Melanosomak)		A	B	C	D



A) [CIL:10017](#). Credit: Prabuddha Sengupta.

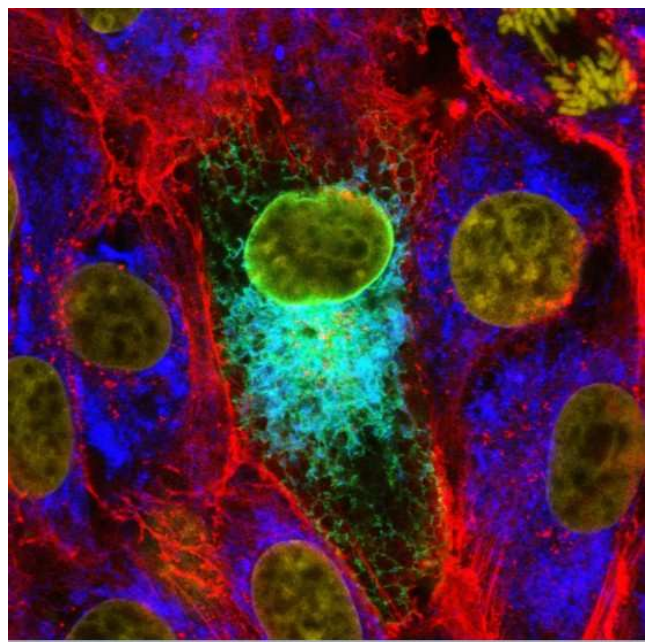


B) [CIL:13729](#). Credits: Seok Min Ji, Michael Lazarou, Chunxin Wang, Lesley A. Kane, Derek P. Narendra, Richard J. Youle. *J Cell Biol*, 191: 933-942, 2010.



Wellcome Images

C) © Alistair Hume/Wellcome Images. Creative Commons by-nc-nd 2.0 UK



Wellcome Images

D) © Paul Duprex/Wellcome Images. Creative Commons by-nc-nd 2.0 UK