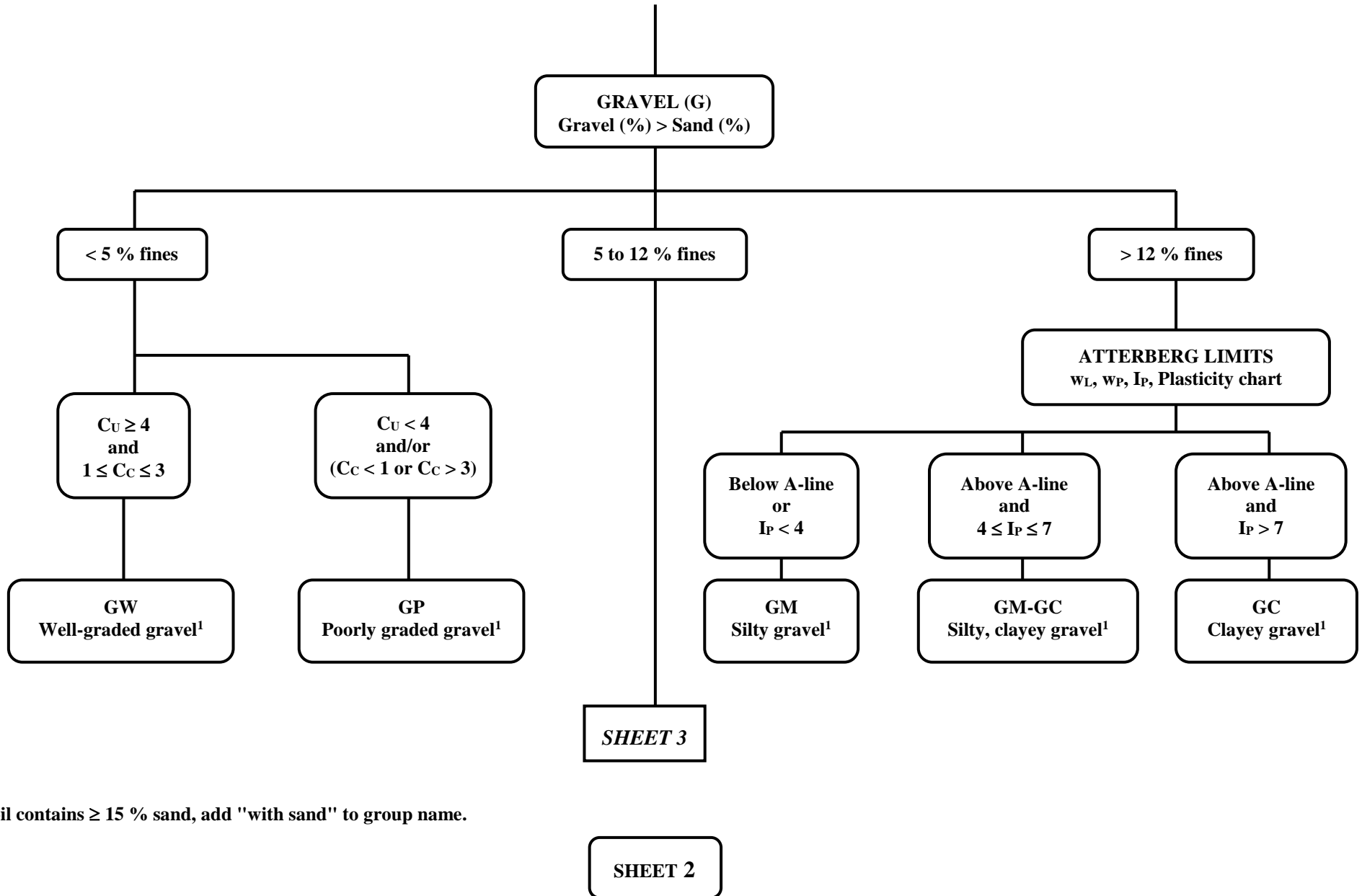
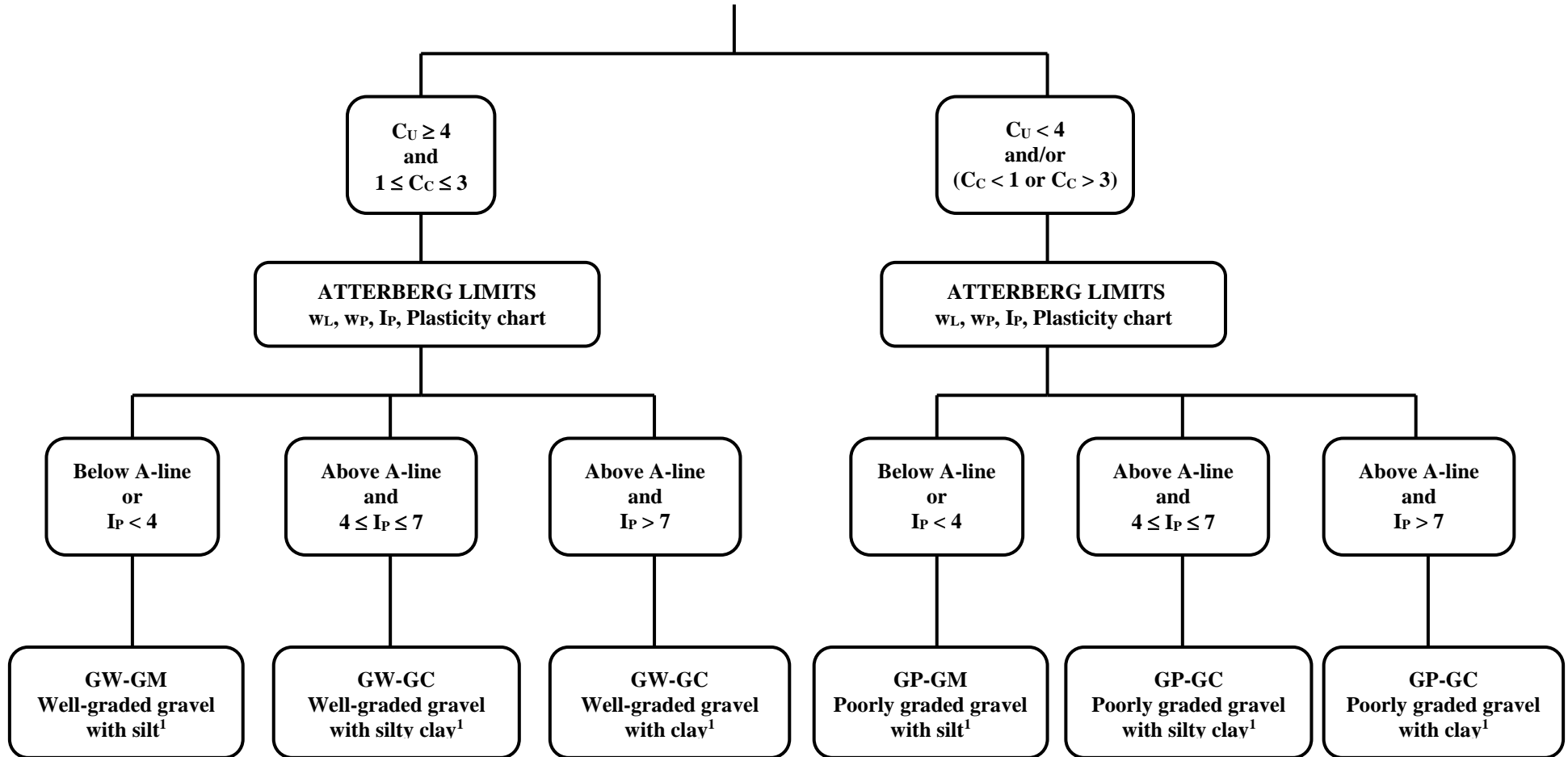


w_L^+ : liquid limit oven dried; w_L^- : liquid limit not dried

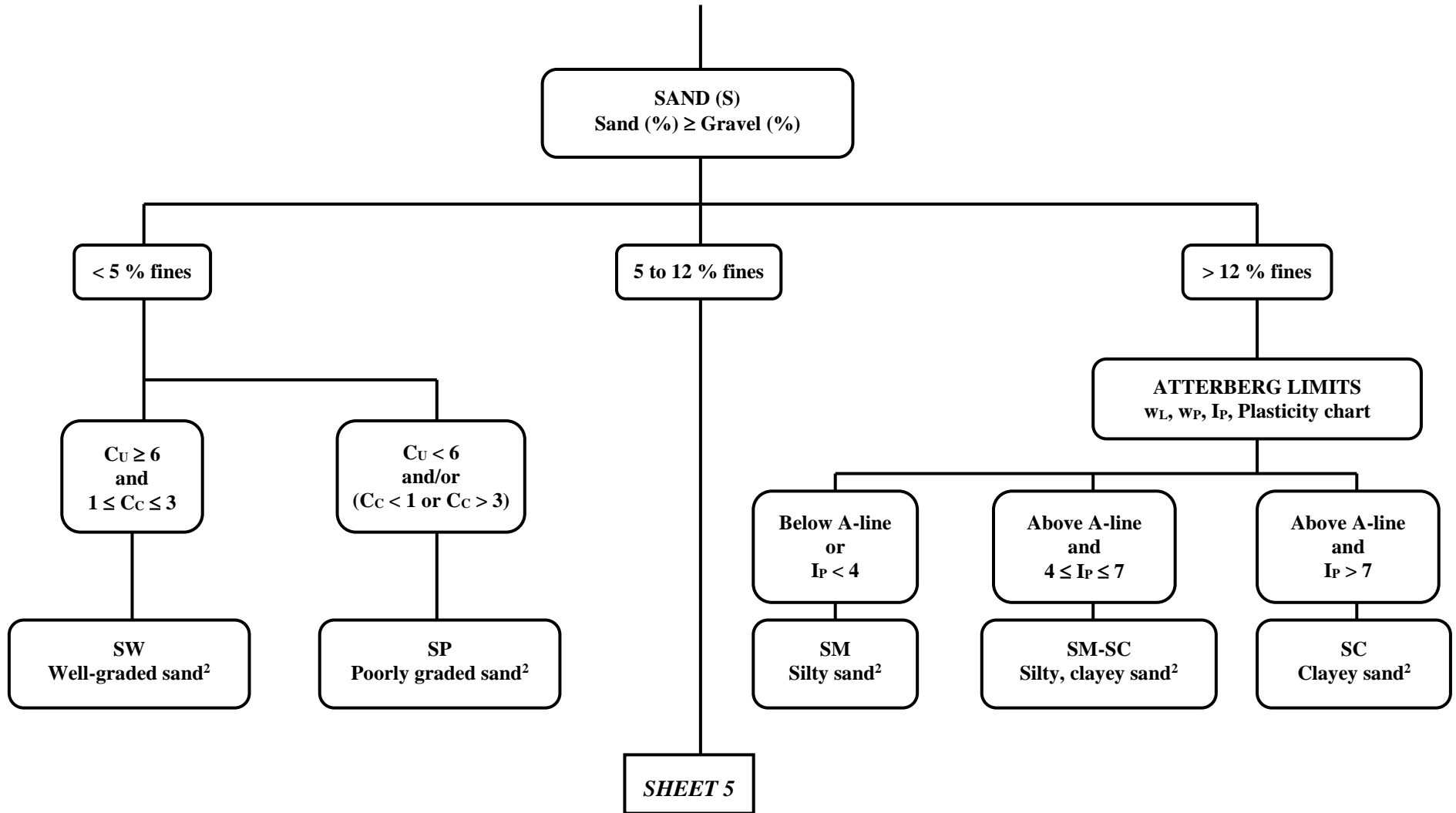
SHEET 1



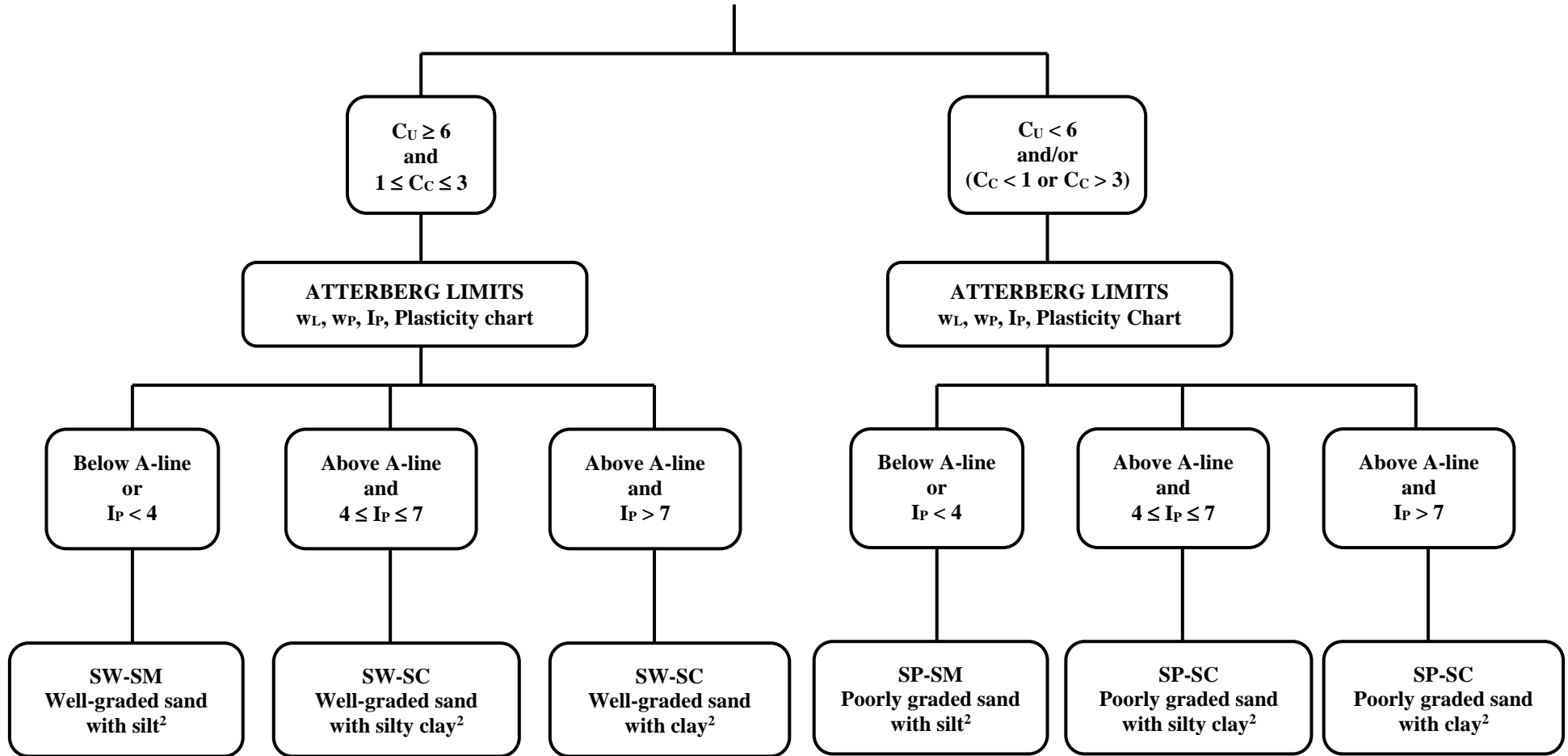
¹ If soil contains ≥ 15 % sand, add "with sand" to group name.



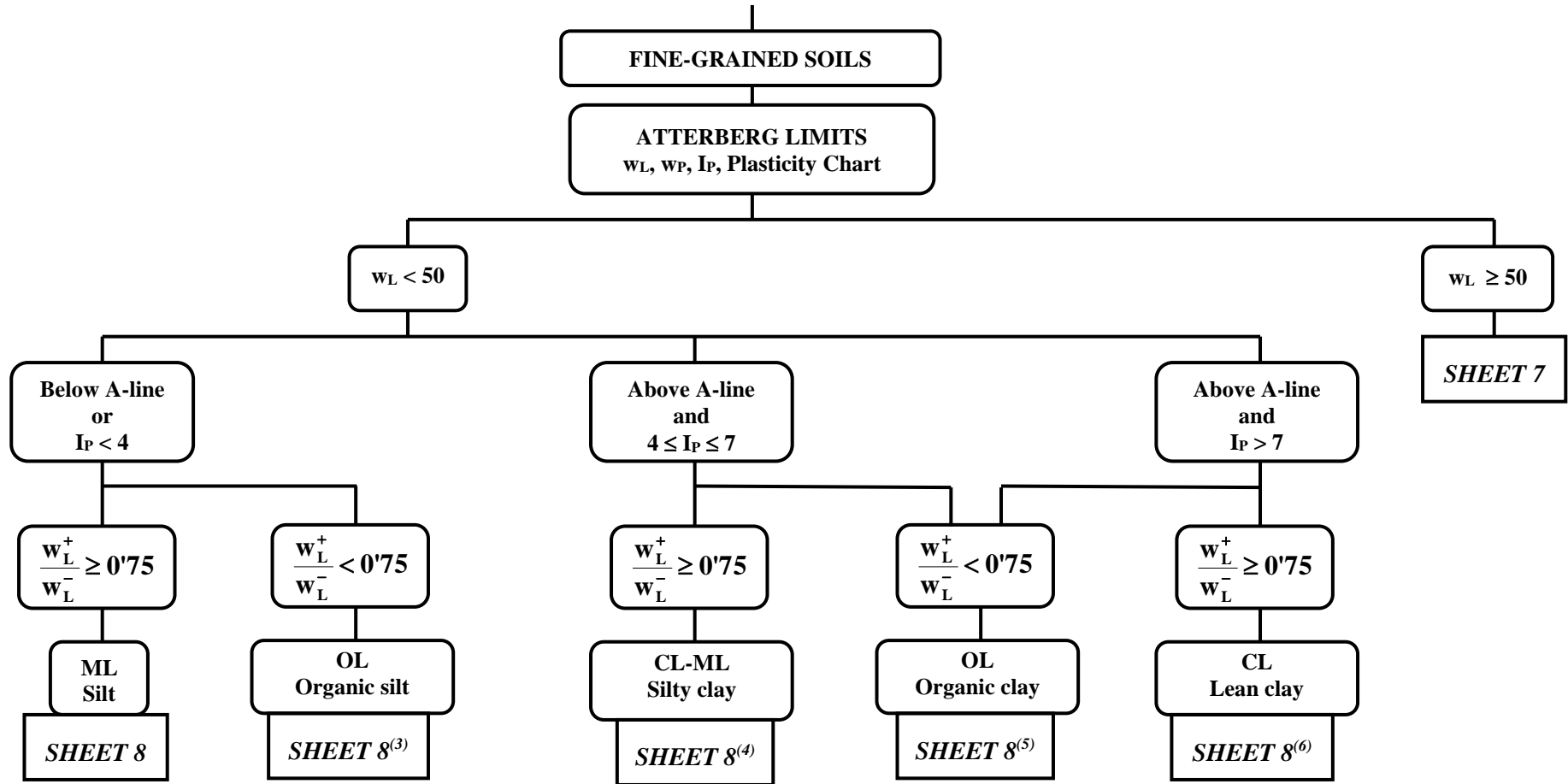
¹ If soil contains ≥ 15 % sand, add "with sand" to group name.



² If soil contains ≥ 15 % gravel, add "with gravel" to group name.



² If soil contains ≥ 15 % gravel, add "with gravel" to group name.

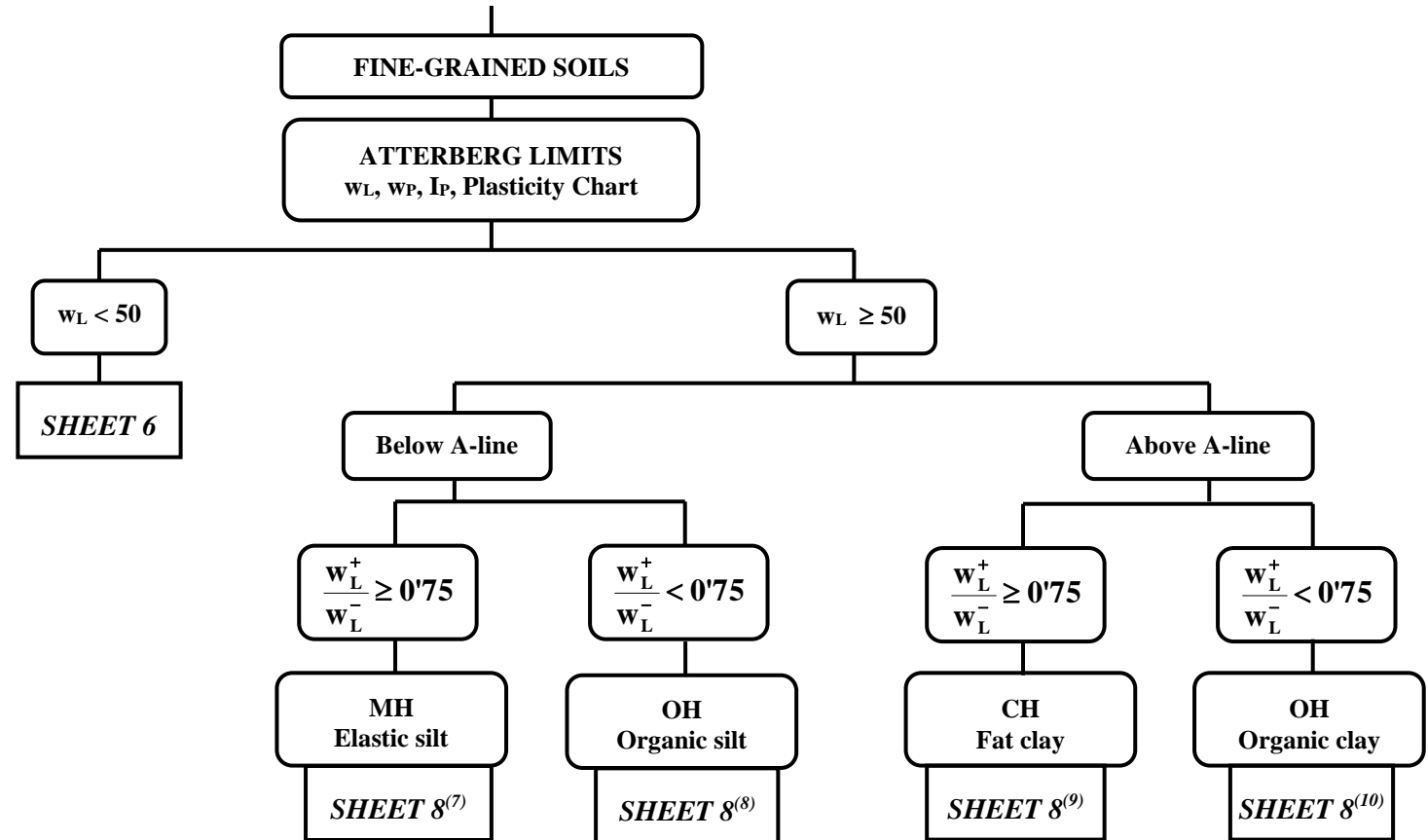


³ In sheet 8, replace "ML, Silt" with "OL, Organic silt".

⁴ In sheet 8, replace "ML, Silt" with "CL-ML, Silty clay".

⁵ In sheet 8, replace "ML, Silt" with "OL, Organic clay".

⁶ In sheet 8, replace "ML, Silt" with "CL, Lean clay".



⁷ In sheet 8, replace "ML, Silt" with "MH, Elastic silt".

⁸ In sheet 8, replace "ML, Silt" with "OH, Organic silt".

⁹ In sheet 8, replace "ML, Silt" with "CH, Fat clay".

¹⁰ In sheet 8, replace "ML, Silt" with "OH, Organic clay".

